

# *Econo-Floss / Mega-Floss*

## Instruction Manual




 **GOLD MEDAL<sup>®</sup>**  
FUNFOOD EQUIPMENT & SUPPLIES

# SAFETY PRECAUTIONS

	<b>⚠ CAUTION</b>
	This equipment is designed and sold for commercial use only. This equipment is not to be used by the consumer in home use. Do not allow direct contact of this equipment by the public when used in food service locations. Only personnel trained and experienced in the equipment operation may operate this equipment. Carefully read all installation instructions before operating the equipment.

	<b>⚠ WARNING</b>
	Always wear safety glasses when servicing this equipment.

	<b>⚠ WARNING</b>
	To avoid serious burns, do NOT touch the kettle while it is hot.

	<b>⚠ WARNING</b>
	Any alterations to this equipment will void the warranty and may cause a dangerous situation. NEVER make alterations to the equipment. Make sure all machine switches are in the OFF position before plugging the equipment into a receptacle.

	<b>⚠ DANGER</b>
	Machine must be properly grounded to prevent electrical shock to personnel. Do NOT immerse the kettle, warmer, or any other part of this equipment in water. Always unplug the equipment before cleaning or servicing.

**NOTE**

The information, specifications and illustrations contained in this manual represent the latest data available at time of publication. Right is reserved to make changes as required at the discretion of Gold Medal Products Company without notice.

# INSTALLATION INSTRUCTIONS

## CHECKING UNIT

Check thoroughly for any damage which may have occurred in transit. **NOTE: Before plugging in the cotton candy machine, the shipping bracket must be lowered.**

This can be done easily by turning the two knobs on each side of the cabinet top then pushing the knobs down to assure that the bracket is completely lowered. This will allow the bell housing to float freely on the springs.

## LOCATION

Place the ECONO-FLOSS / MEGA-FLOSS MACHINE onto the cart or table. Ventilation around the machine is important to insure proper operation. Be sure to allow a minimum of six inches around each side vent. Do not remove the rubber feet.

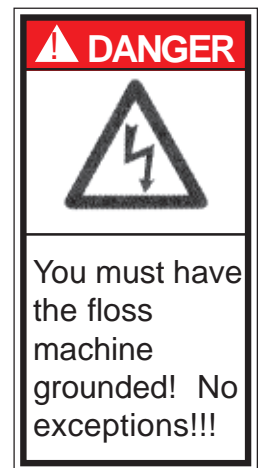
Wash the floss pan thoroughly with soap and water. Install Floss Stabilizer on floss pan (See diagram, page 7). Then put pan on the machine with the floss head extending up through the center of the pan.

As a last precaution before plugging in the machine, look inside the head assembly and make sure the floss ribbon (heating element) has not shaken out of the band during transportation. If the ribbon is out of the band, push it back into place with the index finger.

## ELECTRICAL REQUIREMENTS

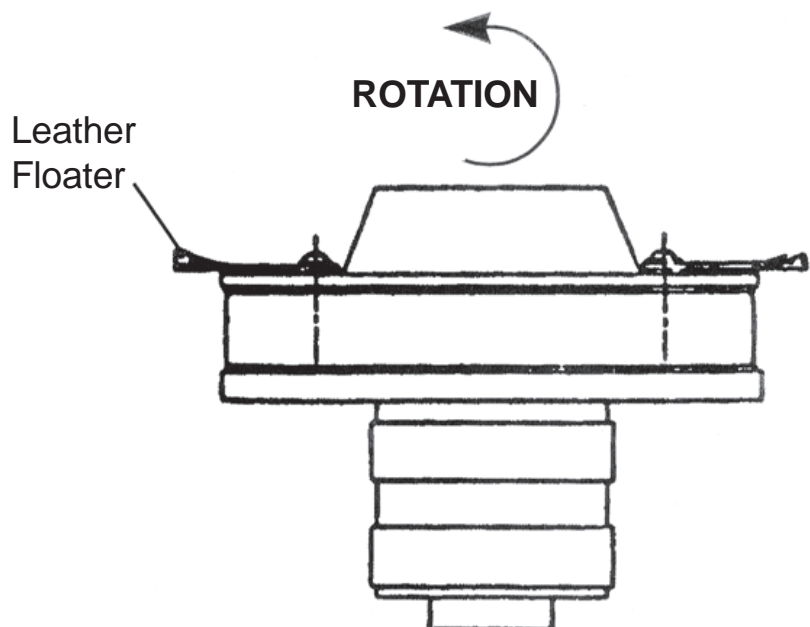
The GOLD MEDAL ECONO-FLOSS / MEGA-FLOSS MACHINE is ready to plug into a 15 amp, 120 volt, 60 cycle standard wall receptacle. Maximum amp draw for the unit at 120 volts is 9 amperes.

**NOTE:** This figure is an approximation and may vary slightly. An overloaded electric circuit will not allow the ECONO-FLOSS / MEGA-FLOSS to make cotton candy.



## FLOATER ADJUSTMENT

Form leather floaters as shown. This creates a lifting action to float the floss across the gap to the side of the floss pan.



# OPERATING INSTRUCTIONS

## CONTROLS AND THEIR FUNCTIONS

### MAIN SWITCH

Turns motor on or off and supplies current to the heat switch.

### HEAT SWITCH


Turns current to the ribbon on or off.


### HEAT CONTROL

This rheostat increases or decreases voltage to ribbon wire heating element graduation. All rheostat settings are at line voltage or below.

## MACHINE OPERATION

1. Plug in floss machine.
2. Without motor running, fill floss head about 90% full with sugar. **DO NOT OVERFILL!** When ever you add sugar to the floss head, always fill it about 90% full. This is necessary to obtain a balanced condition in the floss head or excessive vibration will occur. **NEVER ADD SUGAR WHEN MOTOR IS RUNNING.** After adding FLOSSUGAR you may turn motor back "ON".
3. Turn MAIN SWITCH and HEAT SWITCH to "ON" position to make cotton candy floss.
4. Turn heat control knob in the clockwise position to maximum setting. This setting will produce the fastest possible warm up.
5. The machine should begin to make floss in a few seconds. When the unit gets up to heat, it will probably start to smoke. Just turn the heat control knob in the counter clockwise direction to eliminate the smoking.
6. Once you find the ideal setting for the HEAT CONTROL, you should be able to operate near this position each time.
7. Read the section in this manual on MAKING FLOSS before going into full production.

	<b>⚠ CAUTION</b>
	Never operate equipment for a prolonged period of time with the HEAT CONTROL in a position that causes the sugar to smoke. This will result in excessive carbonization of the ribbon (heat element). If you smell burning sugar or see smoke, reduce the heat.

	<b>⚠ WARNING</b>
	Keep foreign objects out of the head. Floss head rotates at 3450 r.p.m. Operator must keep hands and face clear of head and keep spectators at a reasonable distance. For safety, always us a floss bubble.

## MAKING FLOSS

1. The WHIRL GRIP FLOSS STABILIZER works effectively to prevent floss from leaving the pan. See illustration on page 7 which shows proper installation of the WHIRL GRIP FLOSS STABILIZER.
2. Plug in your machine and operate controls as described under OPERATING INSTRUCTIONS.
3. In operation the floss will collect on the FLOSS STABILIZER.
4. If the floss collects “low” on the stabilizer, twist the leading edge of the leather floaters down. You get more lift and the floss will collect hotter. A little practice should give you good control in any climatic condition.
5. TO PICK UP FLOSS: See diagrams on page 6. Anyone can be an expert at rolling the web of cotton candy onto the cone. First, pick up the cone - if it sticks into the stack of cones, do not “pull”, rather “twist” it off the stack.

Hold an inch or two of the pointed end of the cone between your two fingers and your thumb. With a light flicking action, break the web of floss that is building up in the pan and roll onto cone. Lift up the cone with the ring of floss attached and – by rotating the cone – roll the floss onto it. DO NOT ROLL FLOSS ONTO THE CONE WHILE IT IS INSIDE THE PAN. This will just pack the floss onto the cone. For additional help, see illustrations on page 6. PRACTICE MAKES PERFECT.

If you experienced difficulty in getting the floss to stick to the cone, it will be helpful to pass the cone near the spinner head to pick up a “starter” of melted sugar. Many operators prefer to lift the ring out of the pan and – with a flick of the wrist – turn the ring into a figure eight and whip it around the cone. This leaves giant pockets and makes it appear that you are serving a larger portion.

6. When stopping operation for the day or any prolonged period, it is good to run all the sugar out of the floss head. When empty, turn the heat to the highest position for approximately one minute to somewhat “clean” the band. NEVER ALLOW WATER TO ENTER THE FLOSS HEAD.

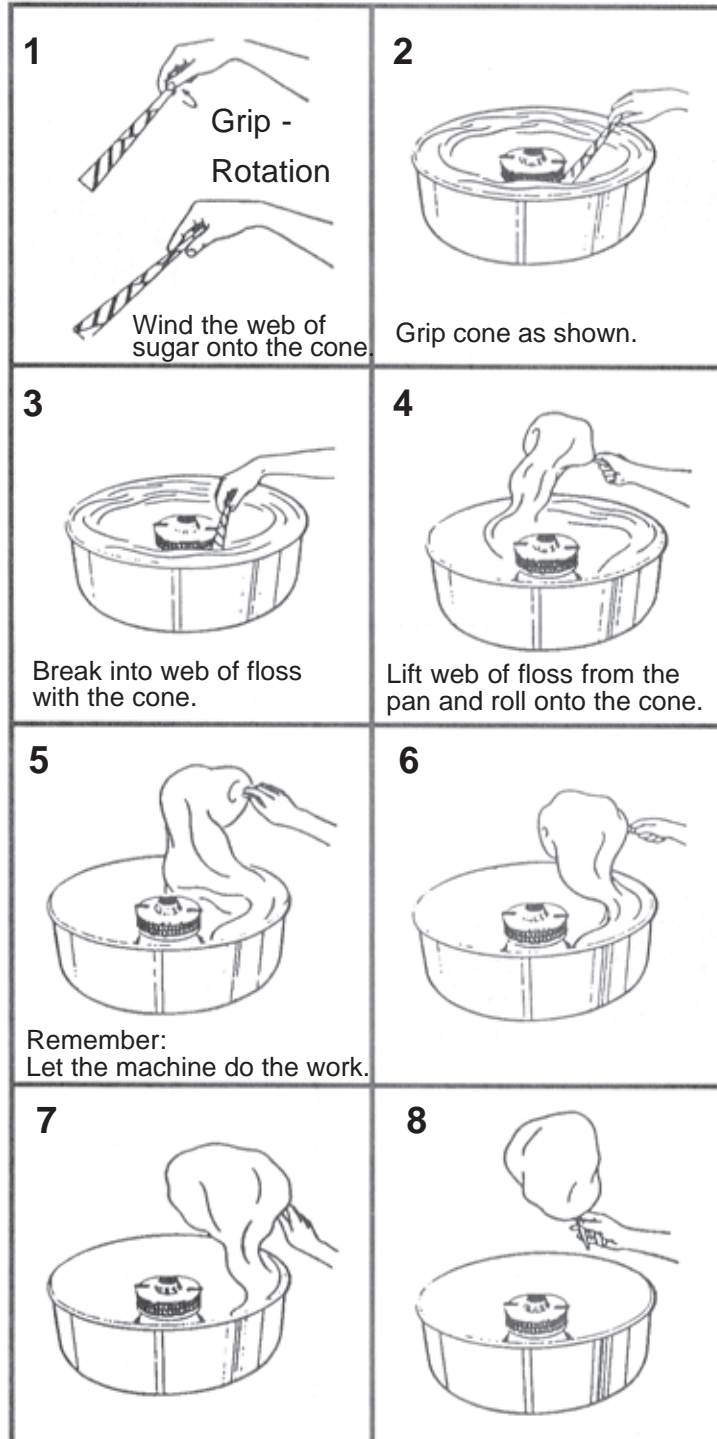
The easiest way to make sure you have the right sugar and proper flavor and colors is to use GOLD MEDAL FLOSSUGAR> FLOSSUGAR gives you good rich colors and flavors, and does not exceed the color limitations imposed by the Food and Drug Administration. FLOSSUGAR comes in sealed plastic coated cartons with handy pouring spouts for filling the floss machine head. If you do not wish to use PRE-MIXED products, then we suggest you mix your own by using our FLOSSINE and your sugar. Follow the directions on the can and mix well. Dampening the sugar at the rate of about one tablespoon of water to five pounds of sugar will bring out the colors much brighter. DO NOT USE EXCESS COLOR – USING MORE COLOR THAN RECOMMENDED WILL NOT DEEPEN THE COLOR OF YOUR FLOSS – THERE IS A LIMIT TO HOW DARK YOU CAN MAKE FLOSS SINCE IT IS 98% AIR. If you use your own flavors in cotton candy, make sure they are not of a gum or starch base – these items burn on the ribbons.

# FLOSS MAKING PROCEDURES

Add Flossugar only while motor is off. Then, manually spin the head to balance. This will eliminate excessive vibration of the head.

When adding sugar, always fill about 90% full.

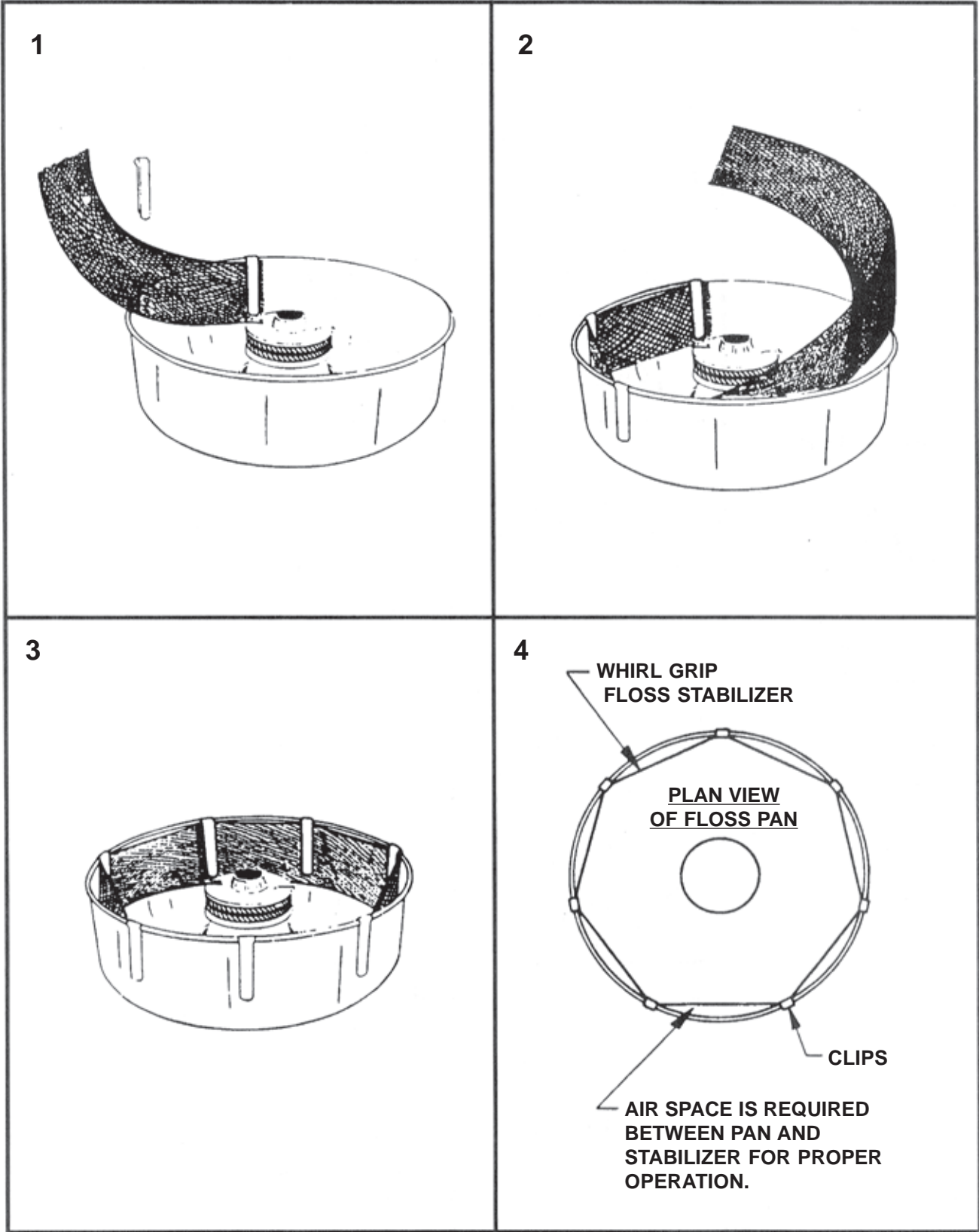
## DO NOT OVERFILL!



**CAUTION**

Keep hands away from spinning head!

# INSTALLATION OF WHIRL GRIP FLOSS STABILIZER





# BAGGING COTTON CANDY

How to get a really big one in the bag !

1. Make it big and fairly firm.
2. Hold bag open with one hand while grasping cotton candy cone with other hand.
3. Twist the serving down into bag.
4. Twist the bag with cone and floss inside, tie and display.

## FOR MAXIMUM SALES

Change colors every 10 - 25 cones. Keep your display full at all times. Always use Gold Medal Flossugar.

